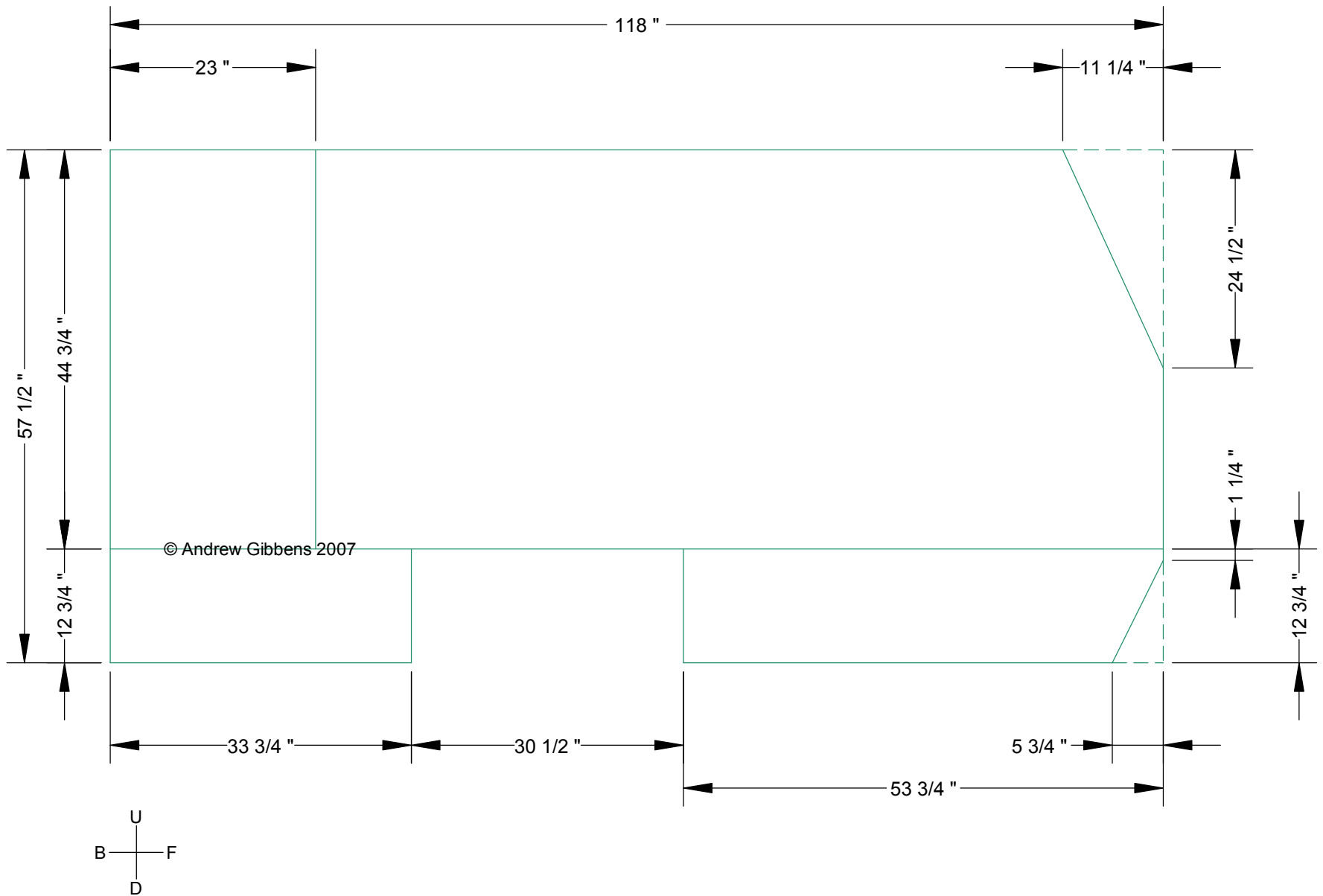


NOTE: Side panel shown without outer skin - outer skin is fitted after body assembly.

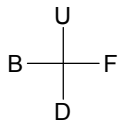
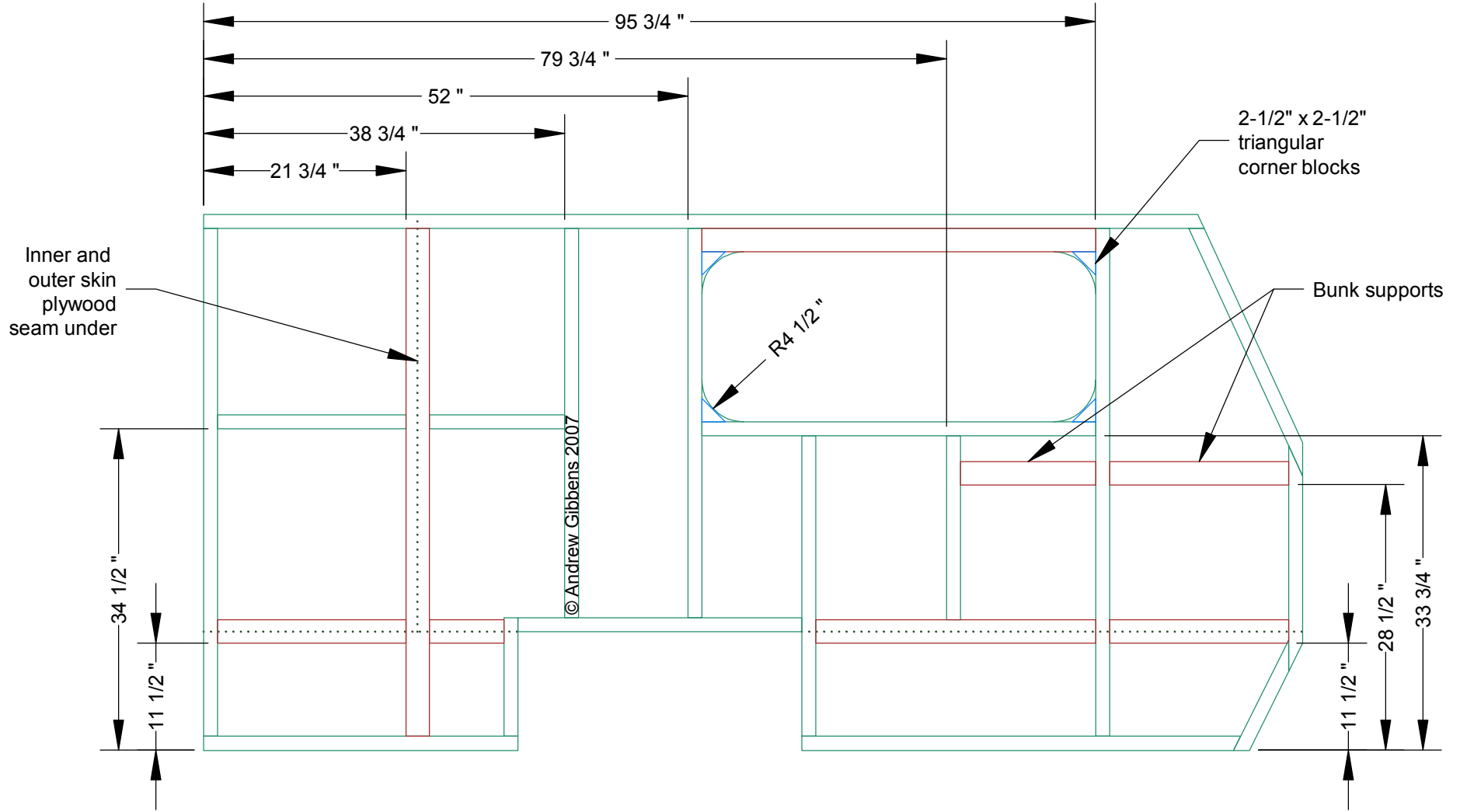
SIDE 1



NOTES:

1. Inner skin shown is building base for side panel. Outer skin fitted later.
2. All 1/8" exterior plywood

SIDE 2
1:16



NOTES:

1. Framing in green 1"x 2" (nominal), framing in brown 1" x 3".
2. Window rough opening 18-1/4" x 42-1/4" to suit standard 18" x 42" radius-corner RV sliding window.
3. Bunk supports required if front children's bunk fitted.

SIDE 3
1:16