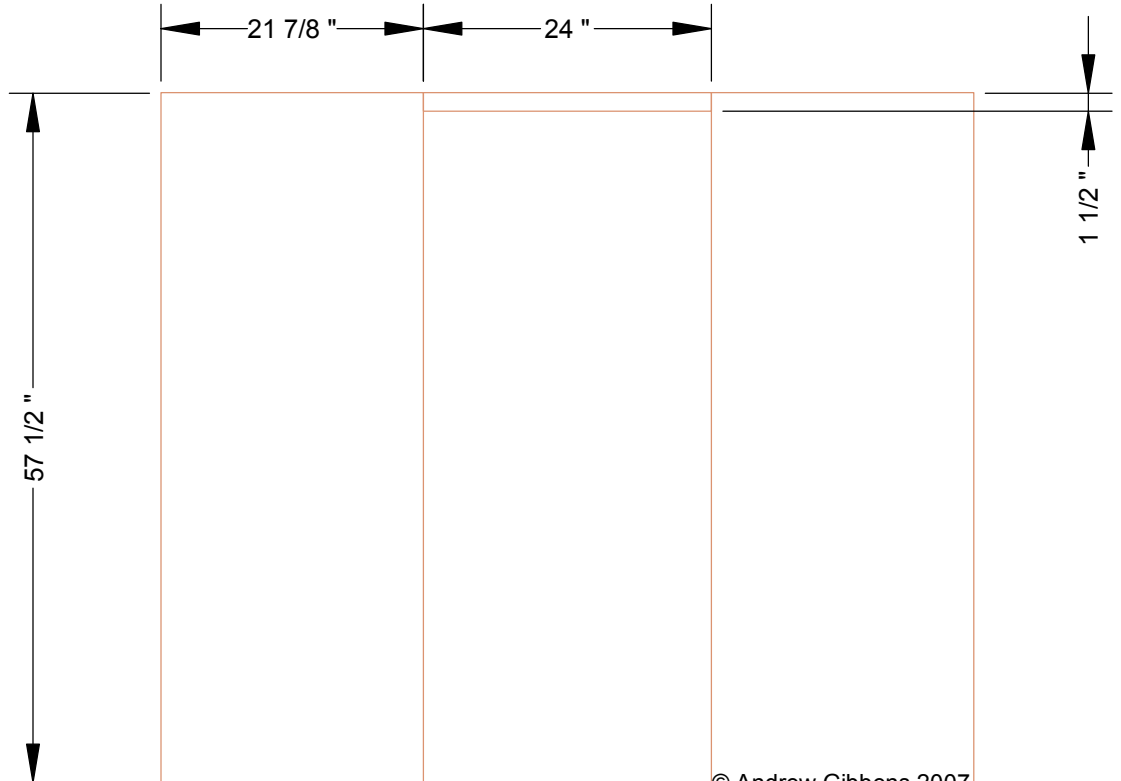
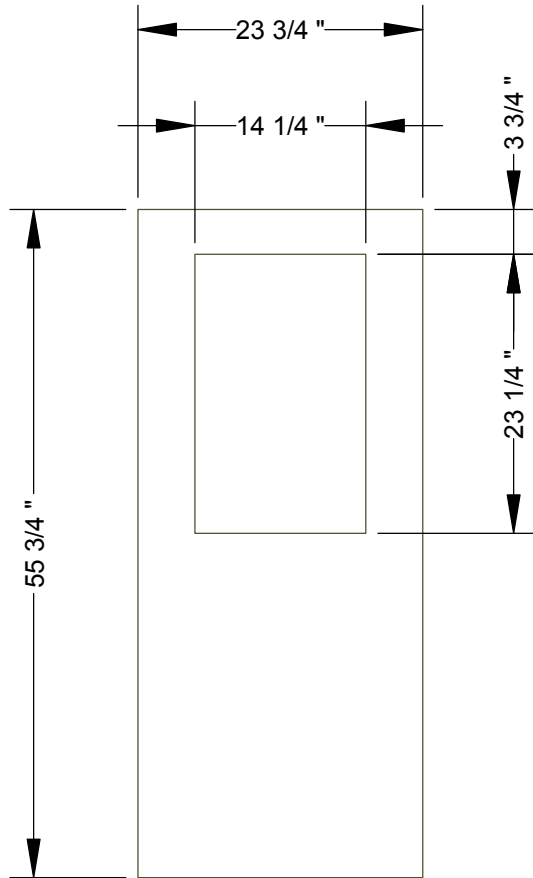
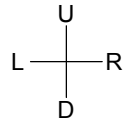


NOTE: Rear panel and door shown without outer skin - outer skin is fitted to rear panel after body assembly. Outer skin can be fitted to door before body assembly.

REAR 1

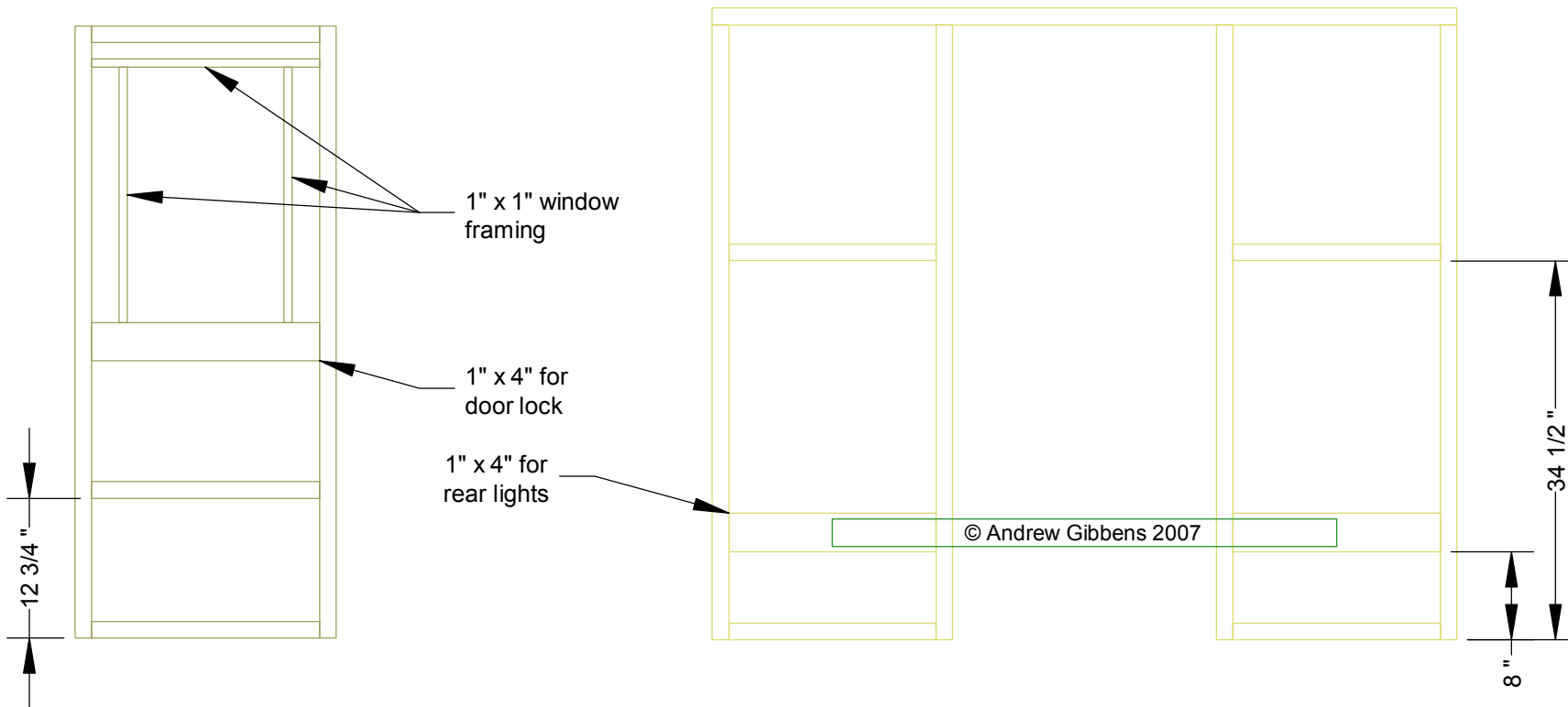
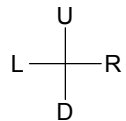


© Andrew Gibbens 2007

NOTES:

1. All rear panel and door skins 1/8" exterior plywood.
2. Rear door window opening 23-1/4" x 14-1/4" to suit standard RV door window.

REAR 2
1:16



NOTES:

1. Framing on rear panel and door 1" x 2" (nominal) except as shown.
2. Temporary brace (in green) fitted across rear panel until body is assembled.

REAR 3
1:16