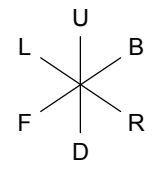


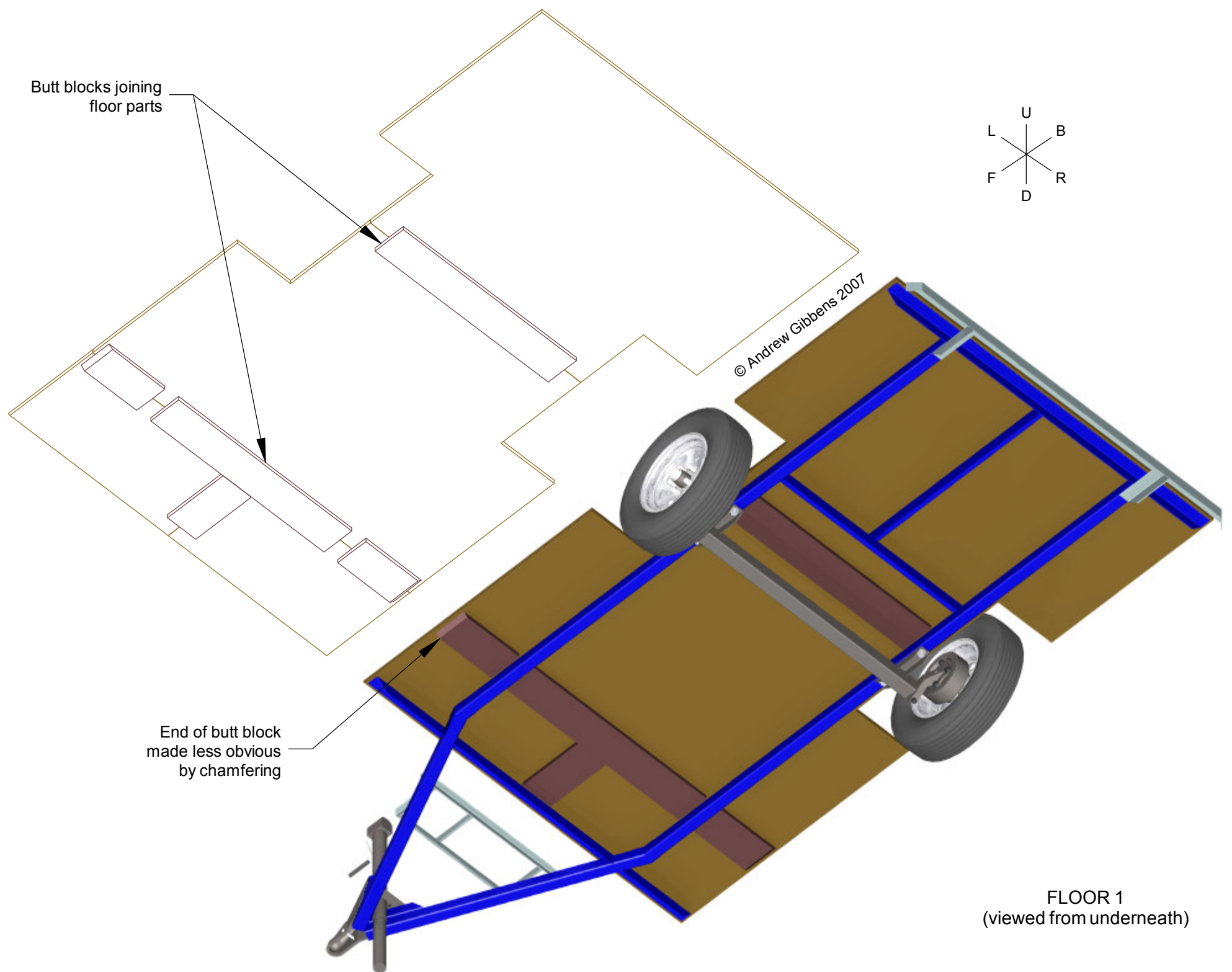
Butt blocks joining floor parts

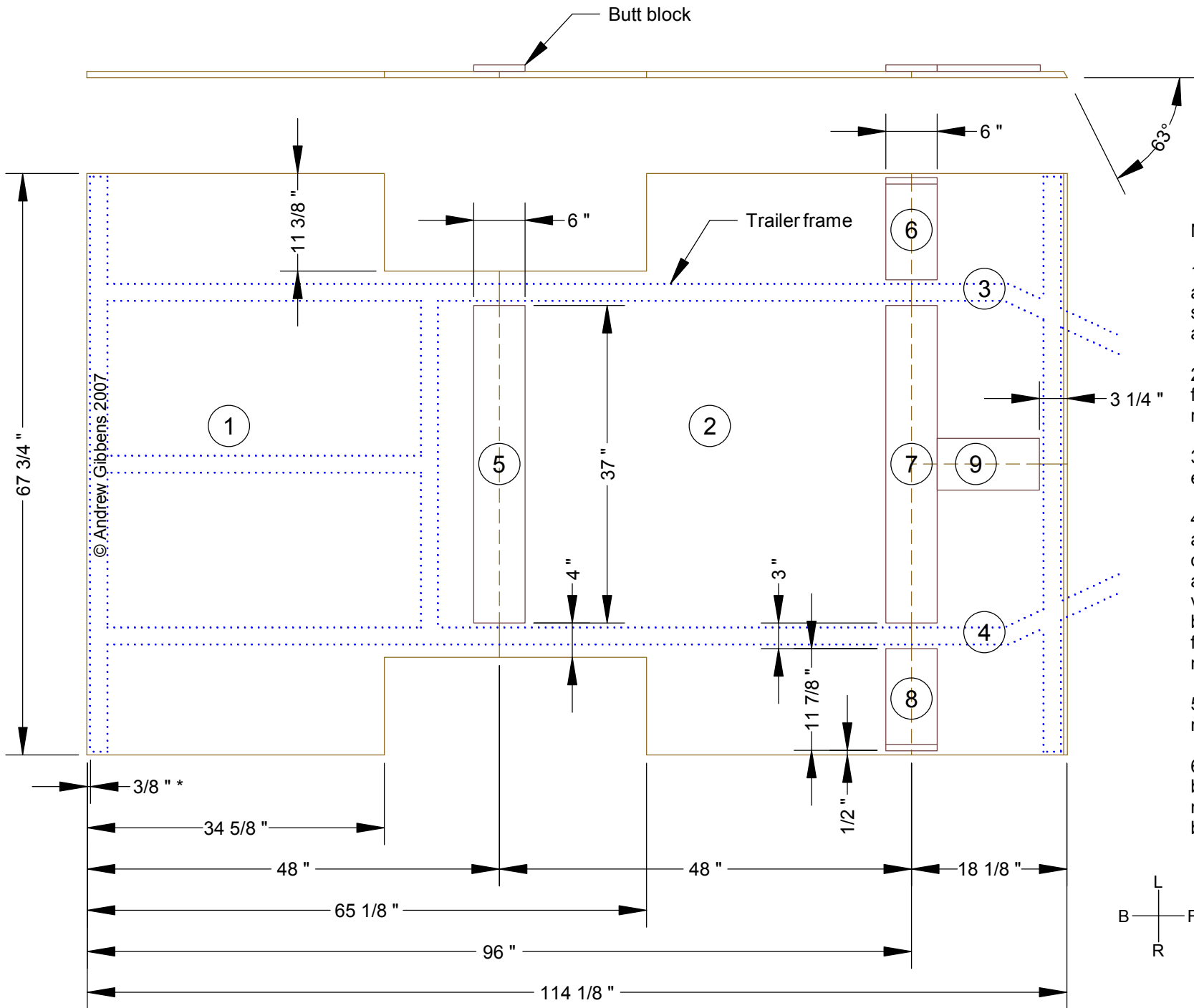


© Andrew Gibbens 2007

End of butt block made less obvious by chamfering

FLOOR 1
(viewed from underneath)

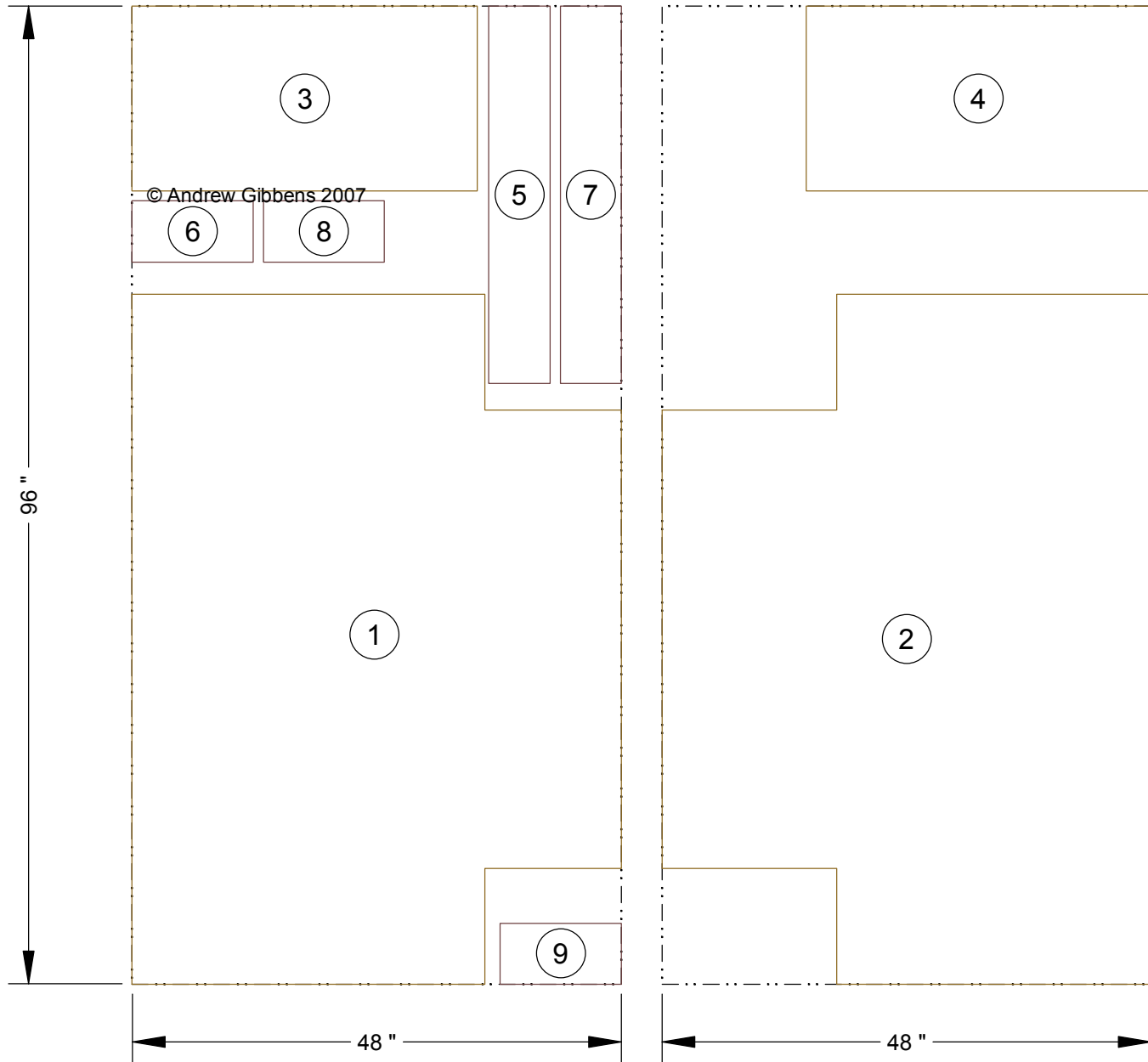




NOTES:

1. Floor drawn upside-down, as constructed. Bottom side of front edge angled as shown.
2. Dimension shown * is from rear edge of floor to rear end of trailer frame.
3. All floor parts 3/4" exterior plywood.
4. Butt blocks screwed and glued to floor. Ends of forward side blocks are tapered to be less visible. Ends of butt blocks kept 1/4" away from trailer frame to not make moisture traps.
5. See next sheet for parts nesting.
6. Floor secured by 3/8" bolts through angle members only. Recess bolt heads into floor.

FLOOR 2
1:16



NOTE: Cut floor pieces from standard 4' x 8' ply sheets as shown.